



HealthCapital
BERLIN BRANDENBURG

Berlin-Brandenburg
The future of health

THE GERMAN CAPITAL REGION
excellence in life sciences & healthcare

HealthCapital Berlin-Brandenburg

The German Capital Region is one of the world's leading locations for the life sciences and healthcare.

Our Health Industry Cluster brings the various stakeholders from Berlin and Brandenburg together.

Leading companies and start-ups in the life sciences field are active in the Cluster, alongside scientists and institutes specialising in prevention, healthcare, rehabilitation, and care. Together, they set new benchmarks for life sciences and healthcare in the capital region.

Berlin Partner for Business and Technology and the Economic Development Agency Brandenburg manage the Cluster, supporting stakeholders with networking, project development, and providing assistance with their innovation and business plans.

Since 2007, the Cluster's work has been based on a master plan. Entitled 'Berlin-Brandenburg – The Future of Health', it was most recently updated in 2020.

The master plan is an important foundation for both the Cluster's work and the successful implementation of 'InnoBB 2025', the joint innovation strategy of the States of Berlin and Brandenburg.

The capital region's strengths:



Scientific
excellence



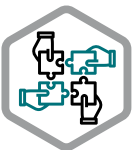
Effective
stakeholder
networking



Top start-up
location



State-of-the-art
medicine



State-of-the-art
medicine



Federal capital



Leading Euro-
pean location for
venture capital



Appealing to
skilled interna-
tional employees

The vision for our Cluster

The work of the Cluster players is united by a joint vision for the future of health in the capital region.

We set new benchmarks in life sciences and healthcare in Berlin-Brandenburg.

Our cluster researches and develops products, solutions and digital offers as a collective to improve health, the quality of life, and create real value that truly benefits people – and to build a future where talent and capital come here to stay.

We envision a region where

- (1) ... Cluster stakeholders join forces to make the region a leading location for the medicine and healthcare of the future.
- (2) ... stakeholders harness the potential of the topics of the future to benefit people and develop new standards, making the region a global hub for life sciences and emerging healthcare technologies.
- (3) ... an effective Cluster helps us create jobs, drive business, foster well-being, and improve healthcare.

Seven strategic focal areas

In future, the Cluster's work will be aligned in seven cross-sector focal areas that create the common foundation for collaboration among the participating stakeholders. The focal areas are designed to contribute to the implementation of 'InnoBB 2025'.

Focal areas of Cluster work



Innovation and technologies



Networking and transfer



Digital health



Capital. Model. Regions



Work environments



Spin-offs and start-ups



Internationalisation

Implementation of the master plan

Our **Cluster management** will ensure active support for the implementation of the master plan. It acts as a central contact point for the Cluster stakeholders, acting at the interface between the stakeholders, the other cluster managements in the economic development agencies, and the administrations of both states.

Its responsibilities include the implementation of strategic activities and dissemination of results from the Cluster. It supports individual topic teams that have emerged within or between the sectors.

An honorary **Cluster spokesperson**, an **Advisory Board**, and an interdisciplinary **expert panel** provide advice and recommend strategic courses of action. They also take on representative functions. All healthcare industry stakeholders in Berlin-Brandenburg are always welcome to join them in their work.

Honorary body

Management



Expert panel



HealthCapital
BERLIN BRANDENBURG

Cluster management



Advisory Board



Cluster spokesperson



Wirtschaftsförderung
Brandenburg | **WFBB**

Steering committee of the Berlin and Brandenburg economic development agencies



Topic teams



Two sectors of activity



Other support from Cluster management

The healthcare industry in the capital region

The healthcare industry in Berlin-Brandenburg employs around 400,000 people and with an annual revenue of around 30 billion euros, is one of the regional economy's significant driving and innovating forces. It provides modern and comprehensive healthcare to over six million people in Berlin and Brandenburg.

The pharmaceutical industry

Numerous global players and SMEs are based in Berlin-Brandenburg. Their success results from innovative products, an excellent scientific and clinical environment, and proximity to the political decision-makers behind the German healthcare system.

Medical technology

The capital region is one of Europe's leading medical technology hubs and has experienced a high growth rate for many years. Many of the companies are SME, and they are among the global leaders in their business fields.

Digital health

In the past decade, a booming start-up scene for digital health solutions has developed in the capital region. The region is now an uncontested top location for this highly innovative subsector, to which ever more established companies, global players, and venture capitalists are attracted.

Clinics and hospitals

The extensive and diverse clinical landscape in Berlin and Brandenburg provides high-quality healthcare to the entire region and is one of its largest employers. The spectrum ranges from the nation's leading university clinic, excellent academic teaching hospitals, and multiple key hospitals to basic and general care.

Rehabilitation facilities

The capital region's multiple inpatient and outpatient rehabilitation facilities add up to an innovative, modern rehabilitation landscape. The majority of inpatient rehab facilities are located in spas and health resorts in Brandenburg.

Care services and nursing homes

A wide-ranging network of nursing homes and a number of outpatient care services provide medical assistance for the regional population. Many people in need of care would like to have lives that are as self-determined as possible, and ever more services are emerging to respect their wishes. This includes (assisted) residential communities, accessible homes with supervision and care services, technical aids, and digital services.

250+
biotech

200+
hospitals
and clinics

300+
medtech

30+
pharmaceutical

#1

100+
digital health

companies

8
technology parks

30+
billion in
turnover

Charité

university clinic

Health region

400.000+
skilled
professionals

200+
university courses

5
universities

20
colleges

10+
accelerators

25+
research institutes

Our sectors

Cluster activities focus on two sectors of activity: life sciences and technologies and innovative care.

The two sectors' tasks are to advance the master plan's focal areas and strategic goals in structurally operative work, boost the stakeholders' impulse to innovate, and promote exchange and networking within and among industries and clusters. For this reason, networking activities and industry events take place within the sectors.

The sectors are responsible for the continuous communication of Cluster programmes and dissemination of knowledge from ongoing activities and topic teams.

'Innovative care' sector

The innovative care sector brings together a number of committed stakeholders that are active in various care sectors in Berlin and Brandenburg.

They cover the entire supply chain, ranging from health promotion and prevention and acute treatment to rehabilitation and care. Various social insurance providers are also involved in this sector.



Health promotion



Prevention



Care



Social security



Outpatient care



Inpatient care



Rehabilitation

‘Life sciences and technologies’ sector

The life sciences and technologies sector essentially maps the capital region’s healthcare industry. It includes biotechnology, the pharmaceutical industry, medical technology, and companies whose specialism is digital health.

The life sciences in the capital region feature extraordinary strength in the following technologies and topics:



Cardiovascular medical technology



Orthopaedics and endoprosthesis



Minimally invasive medicine



Medical biotechnology



Analytics



Diagnostics



Medical informatics



Drug development



Regenerative medicine



Diagnostic imaging

Focal area 1 – Innovation and technologies

Outstanding medical and scientific research is conducted in the capital region. In conjunction with companies that are strong in innovation, this results in excellence and is further promoted by the Cluster. The Cluster concentrates on fast-developing topics in order to take the pole position and increase the visibility of these innovations' added value for the healthcare system. The capital region is pioneering translational medicine, in which research results are quickly and systematically translated into prevention, diagnostics, and treatments.

Our strategic goals

- Enhance excellence in life sciences, medicine, and the technical disciplines and apply it in innovative technologies and processes
- Continue strengthening translational and precision medicine
- Establish sustainable research, development, and production processes



Focal area 2 – Networking and transfer

Innovation often starts at the point where the interaction of stakeholders from different (sub)sectors results in debate and initiates new collaborations. Cluster management provides effective structures, formats, and interfaces for purposes of information and matchmaking. Close cooperation and functional networks support the transfer of new ideas from research into innovative application.

Our strategic goals

- Make the Cluster more usable as a networking platform for stakeholders
- Deepen the dialogue between Berlin and Brandenburg
- Reinforce networks in the healthcare industry
- Generate cross-cluster innovations
- Provide support for crisis management



Focal area 3 – Digital health

The German capital region is clearly Europe's top spot in terms of digital health. The Cluster supports stakeholders as they harness the potential of healthcare data and digital solutions for care, science, and the healthcare industry. This includes promoting interoperability and data integration, as well as ensuring the protection and security of patient information. Employee and company competencies related to the use and application of digital healthcare innovations will also receive support.

Our strategic goals

- Promote and leverage the potential of data science in research and industry
- Support interoperability and data integration
- Make data available for quality improvement in the healthcare sector
- Increasingly apply digital solutions to products and processes
- Strengthen competency in applying and using healthcare innovations



Focal area 4 – Capital. Model. Regions.

Integrated care is the focus of future healthcare. Collaboration and digital networking among all specialist disciplines and sectors can be advanced in the spirit of a real-world laboratory in Berlin-Brandenburg. The Cluster leverages the capital region's potential in order to test sustainable and future-oriented care approaches, cooperation strategies, and logistics solutions. In this way, the capital region will be able to attain a model character on both the national and international levels, thereby providing momentum for other regions.

Our strategic goals

- Establish and expand cross- and trans-sectoral supply chains
- Develop innovative approaches for prevention, treatment, rehabilitation and care
- Develop and test new mobility and logistics solutions
- Leverage strengths in prevention and care for medical and healthcare tourism



Focal area 5 – Working environments

The Cluster helps its stakeholders to counteract any shortages of qualified employees and to further increase the region's appeal. After all, investment and talent are the forces behind the development of appealing life science regions all over the world.

The success factors of applicant marketing, recruitment, and employee retainment increasingly include attractive opportunities, flexible working hours, a stimulating and collaborative working environment, sustainability, and gender equality. To ensure the capital region's future performance, the Cluster focuses on the healthcare industry's qualified workforce in the Working environments focal area.

Our strategic goals

- Test new forms of work and design them to support health
- Inspire people to seek employment in the healthcare industry
- Support companies in acquiring and retaining skilled employees
- Encourage dialogue between training institutes, social partners and companies in the healthcare industry

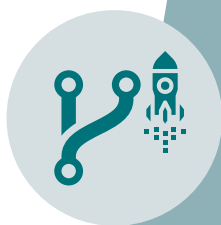


Focal area 6 – Spin-offs and start-ups

The German capital region is already the most dynamic and appealing start-up environment in Germany. The Cluster's work aims to consolidate this position by continuing to enhance and expand the excellent framework conditions that are already in place in the life sciences and healthcare.

Our strategic goals

- Support exchange between start-ups and established players
- Provide information relevant to founding a business
- Support young, developing companies
- Strengthen infrastructures for young companies



Focal area 7 – Internationalisation

Value chains and networks are more global than ever before, not least due to digitalisation. The capital region's international profile and visibility play a decisive role in its future competitiveness and attractiveness. The Cluster systematically works to enhance Berlin-Brandenburg's reputation as an innovation hub for global healthcare issues in constant demand by stakeholders around the globe.

Our strategic goals

- Strengthen the capital region's international profile
- Learn from best practice examples while continuing to advance the Berlin-Brandenburg healthcare region
- Develop the capital region as a key location for solutions to global health challenges
- Expand global networking and international collaboration



A Cluster for everyone

Our Cluster's vibrancy is maintained by exchange and collaboration among as many participants as possible. The more diverse and tighter the network, the greater and more precise its impact.

Working in the Cluster means shaping the Berlin-Brandenburg healthcare region while strengthening your own competitive ability by being involved in innovations, synergies, and information.

Become part of our unique healthcare region and benefit from an internationally leading innovation hub with an excellent network – in the heart of Europe!

Cluster Management

HealthCapital Berlin-Brandenburg

Cluster Hotline: +49 (0)30 46302-463



www.healthcapital.de



HealthCapital
BERLIN BRANDENBURG



**Berlin Partner für Wirtschaft
und Technologie GmbH**

Fasanenstr. 85
10623 Berlin
www.berlin-partner.de
Twitter: @BerlinPartner

Contact:

T +49 (0)30 46302-463
info@healthcapital.de

**Wirtschaftsförderung
Brandenburg | WFBB**

**Wirtschaftsförderung
Land Brandenburg GmbH**
Babelsberger Straße 21
14473 Potsdam
www.wfbb.de
Twitter: @WFBBBrandenburg



EUROPÄISCHE UNION

Europäischer Fonds für
regionale Entwicklung

Funded by the State of Berlin
through the Investitionsbank
Berlin and the State of
Brandenburg, cofunded by the
European Regional Develop-
ment Fund.